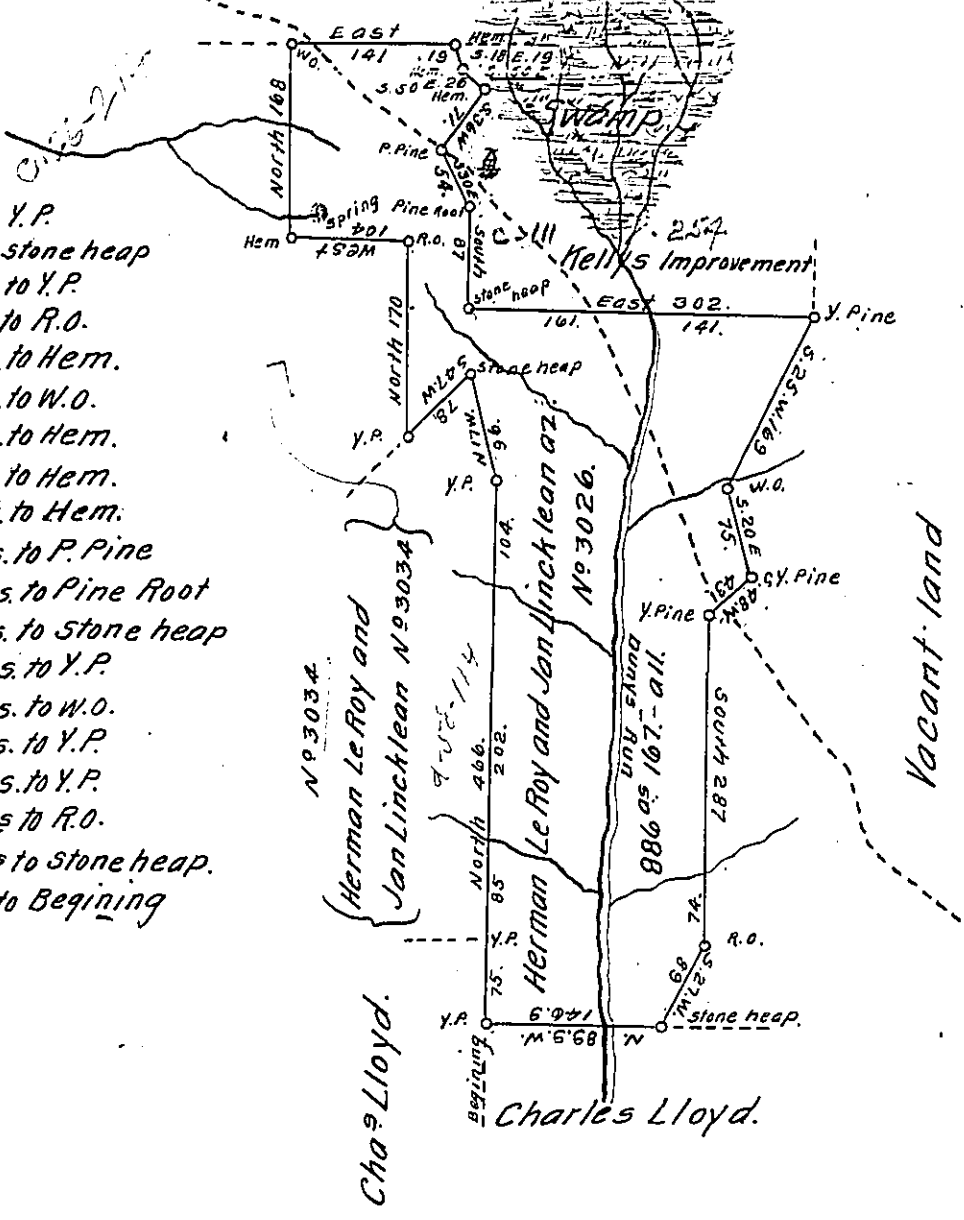


Land of Henry Drinker

- Beginning at a Y. P.
- Thence North 466 ps. to Y. P.
- " N. 17. W. 96 ps. stone heap
- " S. 47 W 78 ps. to Y. P.
- " North 170 ps. to R.O.
- " West 104 ps. to Hem.
- " North 168 ps. to W.O.
- " East 141 ps. to Hem.
- " S. 18. E. 19 ps. to Hem.
- " S. 50 E. 26 ps. to Hem.
- " S. 36 W. 71 ps. to P. Pine
- " S. 30 E. 54 ps. to Pine Root
- " South 87 ps. to Stone heap
- " East 302 ps. to Y. P.
- " S. 25 W. 169 ps. to W.O.
- " S. 20 E. 75 ps. to Y. P.
- " S. 48 W. 43 ps. to Y. P.
- " South 287 ps to R.O.
- " S. 27. W. 89 ps to stone heap.
- " N. 89.9 W. 146.9 to Beginning



Surveyed as above described for Dr. A. B. Massey in pursuance of a Warrant granted to Herman Le Roy and Jan Lincklean Az. Numbered 3026 dated the 13<sup>th</sup> Dec. 1792. Situate in Chapman Township Clinton Co. Surveyed August 14<sup>th</sup> 1842. Containing Eight hundred and Eighty Six Acres. One hundred and Sixty Seven perches & all for Roads.

To Jacob Sallade Esq. }  
 Surveyor General. }

B. W. Morrison. D. S.

IN TESTIMONY that the above is a copy of the original remaining on file in the Department of Internal Affairs of Pennsylvania, made conformably to an Act of Assembly approved the 16th day of February, 1833, I have hereunto set my Hand and caused the Seal of said Department to be affixed at Harrisburg, this third day of May 1912.

*Henry Howell*  
 Secretary of Internal Affairs.